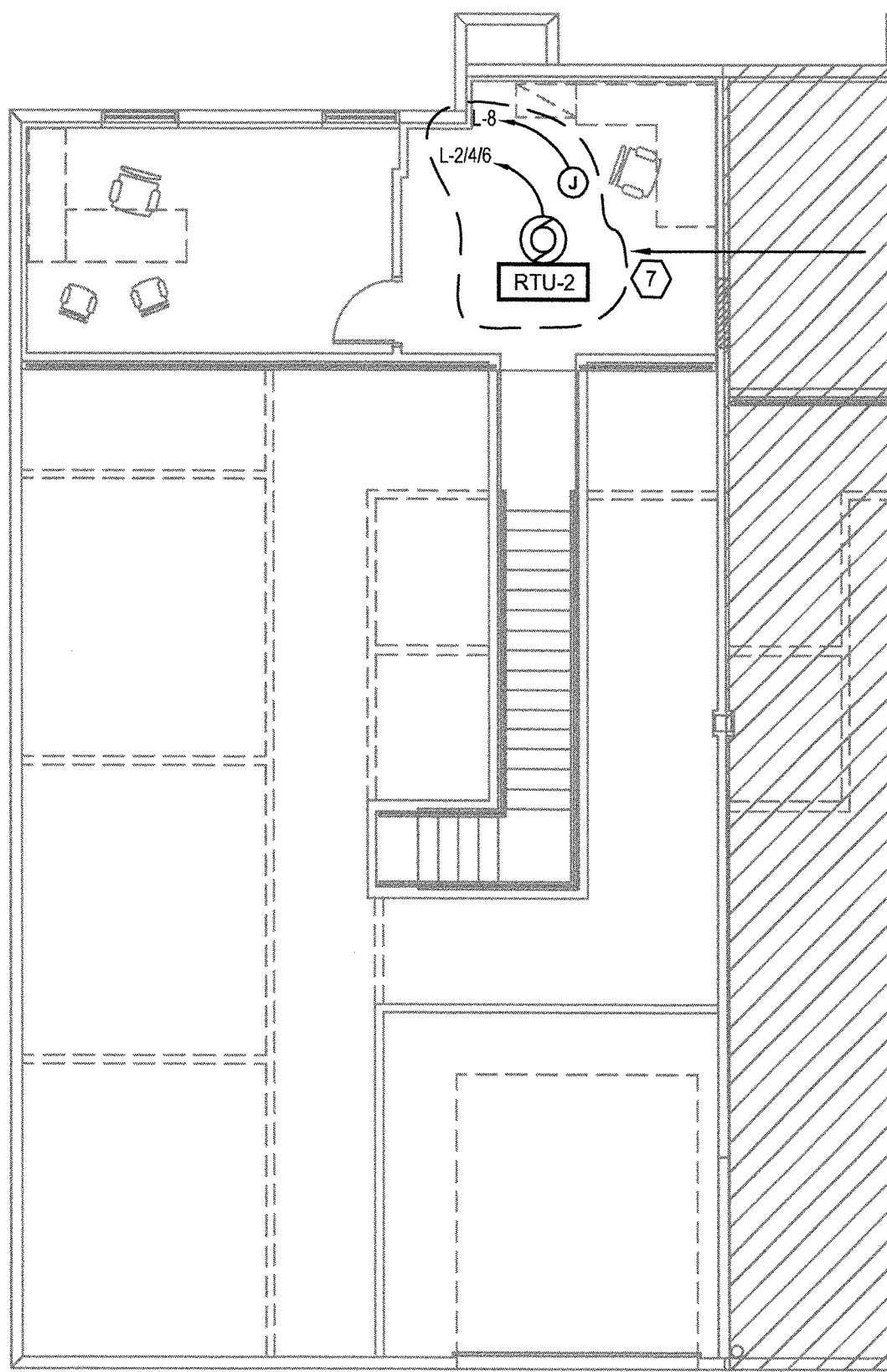
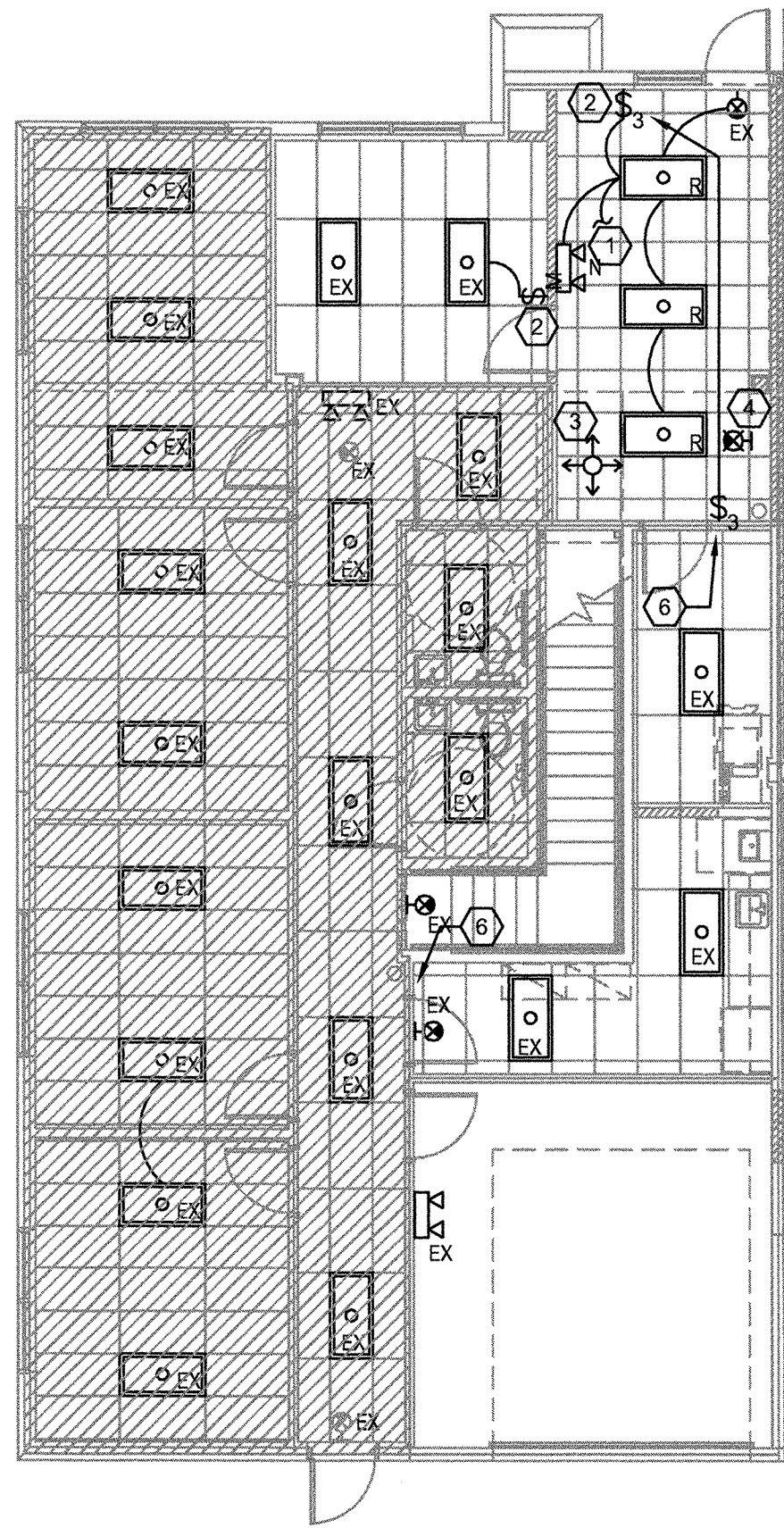


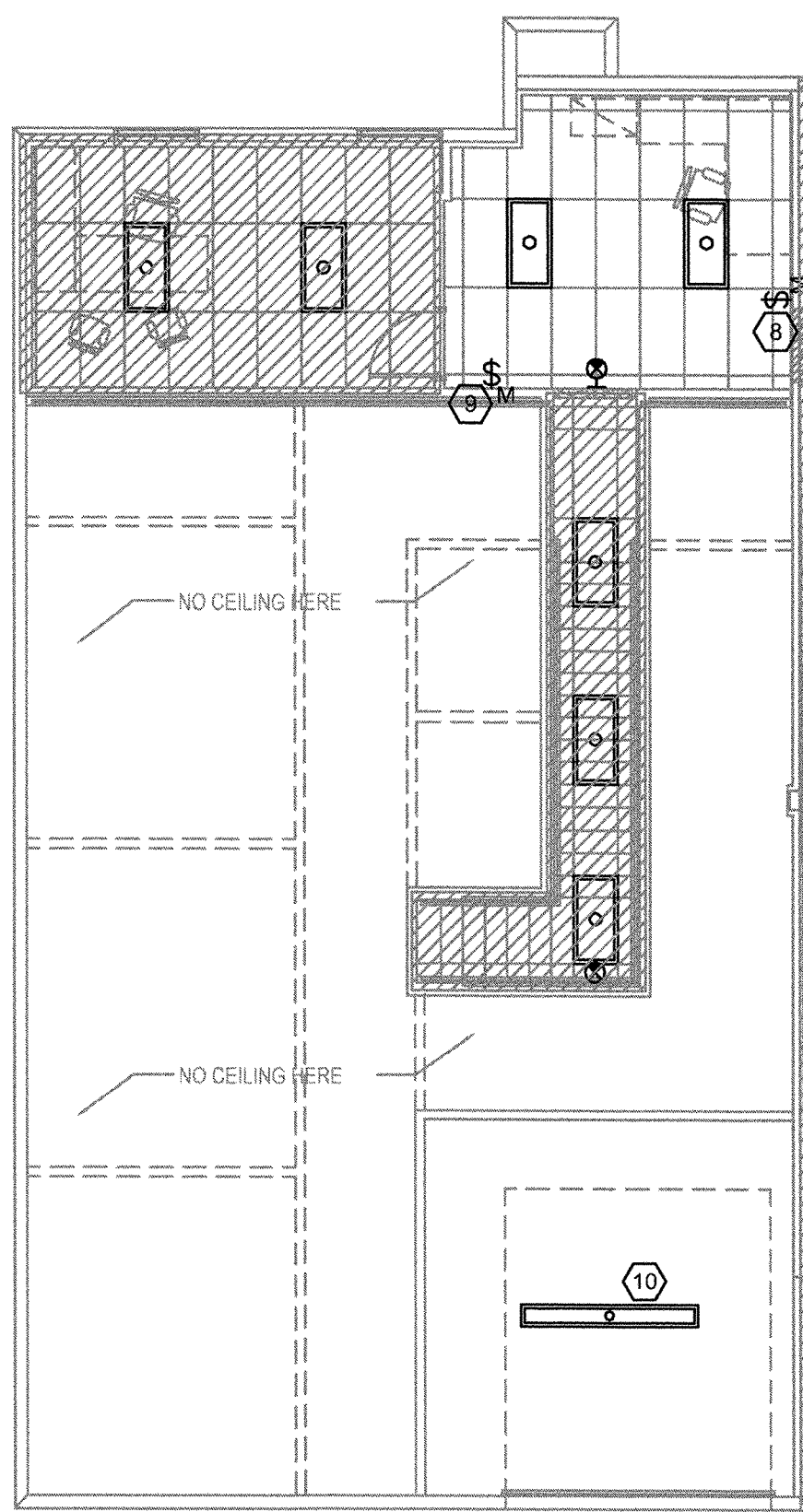
ELECTRICAL POWER PLAN - FIRST FLOOR
SCALE: 1/8" = 1'-0"



ELECTRICAL POWER PLAN - SECOND FLOOR
SCALE: 1/8" = 1'-0"



ELECTRICAL LIGHTING PLANS - FIRST FLOOR
SCALE: 1/8" = 1'-0"



ELECTRICAL LIGHTING PLAN - SECOND FLOOR
SCALE: 1/8" = 1'-0"

ELECTRICAL KEY NOTES

- 1 TIE RELOCATED FIXTURE INTO EXISTING HALL LIGHTING USING 2#12, 1#12G. IN 1/2"C.
- 2 RELOCATE EXISTING SWITCH TO LOCATION SHOWN.
- 3 RELOCATE EXISTING OCCUPANCY SENSOR TO PROVIDE COVERAGE OF RECONFIGURED HALLWAY.
- 4 REMOVE EXISTING EXIT LIGHT.
- 5 CONNECT EXISTING RECEPTACLE TO EXISTING RECEPTACLES CIRCUIT LOCATED IN ROOM.
- 6 REPLACE EXISTING 3-WAY SWITCH WITH REGULAR TOGGLE SWITCH. SWITCH SHALL CONTROL POWER PACK AND FIXTURES LOCATED IN ROOM. PROVIDE NEW POWER PACK AS NEEDED.
- 7 INTERCEPT CONDUIT & WIRING FROM RTU-2 TO PANEL "L1" AND REROUTE TO PANEL "L". REMOVE AND REPLACE EXISTING 3P-50A CIRCUIT BREAKER IN PANEL "L1" WITH EXISTING 3P-70A CIRCUIT BREAKER LOCATED IN PANEL "L1" MAKE CONNECTION TO PANEL "L" AS REQUIRED TO POWER EXISTING RTU-2.
- 8 DEMO EXISTING SWITCH.
- 9 EXISTING SWITCH SHALL BE RE-CIRCUITED TO CONTROL BOTH FIXTURES IN ROOM.
- 10 TIE INTO EXISTING CORRIDOR FIXTURE USING 2#12, 1#12G. IN 1/2"C. DO NOT EXTEND SWITCH LEG.
- 11 CONNECT TO EXISTING RECEPTACLE USING 2#12, 1#12G IN 1/2"C.

A Ø:		11.44	kVA											3 Ø		4 W
B Ø:		20.70	kVA													120/208 VOLT
C Ø:		14.76	kVA													225 AMP BUS
TOTAL:		46.90	kVA													22,000 A.I.C.
				130		AMPS										
COND. SIZE	WIRE SIZE	LOAD DESCRIPTION	A Ø	B Ø	C Ø	C/B	CKT NO.	CKT NO.	C/B	A Ø	B Ø	C Ø	LOAD DESCRIPTION	WIRE SIZE	COND. SIZE	
		(E) LIGHTING	1.03			1P-20	1	2	3P-70	4.80			ROOF TOP UNIT 2	3#4	1"	
		I		1.25		I	3	4			4.80					
		V			1.03	I	5	6				4.80				
		(E) RECEPTACLES	1.03			I	7	8	1P-20	0.42			DAMPER	2#12	1/2"	
		I		1.66		I	9	10	I		2.07		(E) COPIER			
		I			0.62	I	11	12	I			1.03	(E) EWC			
		I		1.25		I	13	14	V				SPARE			
		I			1.25	I	15	16	2P-30		4.78		(E) INSTANT WH			
		I			1.25	I	17	18				4.78				
		I		1.66		I	19	20	1P-20				FUTURE REFRIGERATOR			
		I			2.49	I	21	22	1P-30		2.40		EVH-1	2#10	3/4"	
		I			1.25	I	23	24					SPACE			
		V		1.25		V	25	26					I			
		SPACE					27	28					I			
		I					29	30					I			
		I					31	32					I			
		I					33	34					I			
		I					35	36					I			
		I					37	38					I			
		I					39	40					I			
		V					41	42					V			

tercilla **courtemanche** architects
AA 0003414
2047 vista parkway, suite 100
west palm beach, florida 33411 ph: 561.478.4457 fx: 561.478.4102

Tenant Improvement for:
SUITE 101
Gardens Park of Commerce - Building 3
Palm Beach Gardens, FL

commission 212031
date: 5-29-12
revision date
no.
drawing **E1.1**
copyright 2012

RGD
CONSULTING ENGINEERS
MECHANICAL | ELECTRICAL | PLUMBING | FIRE PROTECTION
www.rgdengineers.com
MADE IN THE USA

1232 INDIANTOWN RD, SUITE 104, JUPITER, FL 33458 (561) 743-0165
These Drawings are NOT VALID for any purpose which requires the original signature and seal of the engineer unless the original signature and seal are affixed.
Drawings not signed and sealed by the engineer shall not be submitted to any authority or used for any purpose where signed and sealed documents are required.

WILLIAM K. RAFALKO
FLORIDA P.E. NO. 71812
ELECTRICAL ENGINEER
CERT. OF AUTH. 5454
DATE 5.31.2012

THE CONTENTS OF THESE DOCUMENTS, INCLUDING OF THE DESIGN ARE COPYRIGHTED AND PROPRIETARY. THE ARCHITECT SHALL USE ALL LEGAL REMEDIES AVAILABLE TO PROTECT SAID COPYRIGHT. ANY USE NOT AUTHORIZED IN WRITING BY THE ARCHITECT IS PROHIBITED.